

Admission

Updated on November 17, 2022

- I. First-time Freshmen Applied, Admitted, and Enrolled
- II. First-time Freshmen Admission, Yield Rate
- III. First-time Freshmen SAT Profile
- IV. Transfer Student Applied, Admitted, and Enrolled
- V. Transfer Student Admission Rate & Yield Rate
- VI. Graduate Student Admission

I. First-Time Freshmen Applied, Admitted, and Enrolled

Residency Gender

Chart ADM 1. 1 First-Time Freshmen Applied, Admitted, Enrolled, 2010-2022

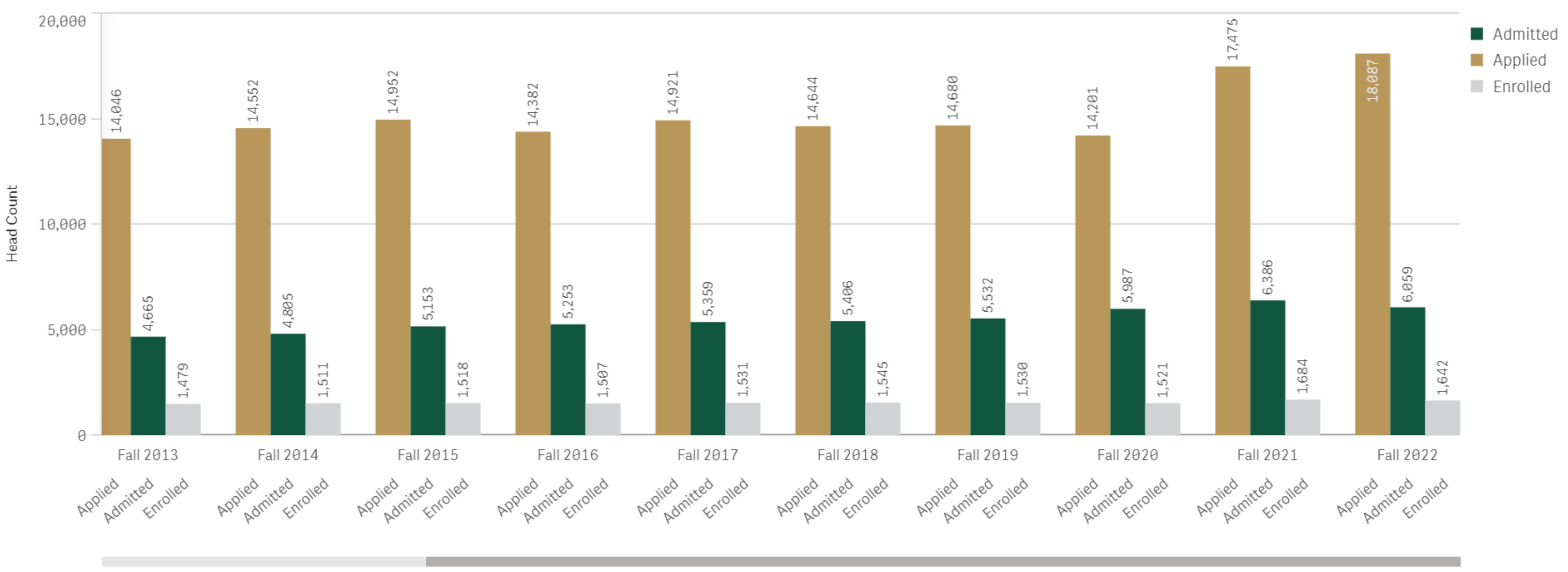


Table ADM 1.1 First-Time Freshmen Applied, Admitted, Enrolled, 2010-2022

	Fall 2022			Fall 2021			Fall 2020			Fall 2019			Fall 2018	
	Totals	In-state	Out-of-state	Totals	In-state	Out-of-state	Totals	In-state	Out-of-state	Totals	In-state	Out-of-state	Totals	In-state
	Applied	18,087	7,088	10,999	17,475	7,089	10,386	14,201	6,031	8,170	14,680	6,154	8,526	14,644
Male	6,841	2,639	4,202	6,630	2,653	3,977	5,527	2,387	3,140	5,667	2,369	3,298	5,654	2,475
Female	11,246	4,449	6,797	10,845	4,436	6,409	8,674	3,644	5,030	9,013	3,785	5,228	8,990	3,715
Admitted	6,059	2,958	3,101	6,386	3,110	3,276	5,987	3,052	2,935	5,532	2,885	2,647	5,406	2,789
Male	2,661	1,198	1,463	2,766	1,265	1,501	2,546	1,261	1,285	2,427	1,210	1,217	2,392	1,231
Female	3,398	1,760	1,638	3,620	1,845	1,775	3,441	1,791	1,650	3,105	1,675	1,430	3,014	1,558
Enrolled	1,642	977	665	1,684	1,068	616	1,521	1,020	501	1,530	947	583	1,545	965
Male	725	392	333	716	455	261	595	396	199	628	384	244	648	401
Female	917	585	332	968	613	355	926	624	302	902	563	339	897	564

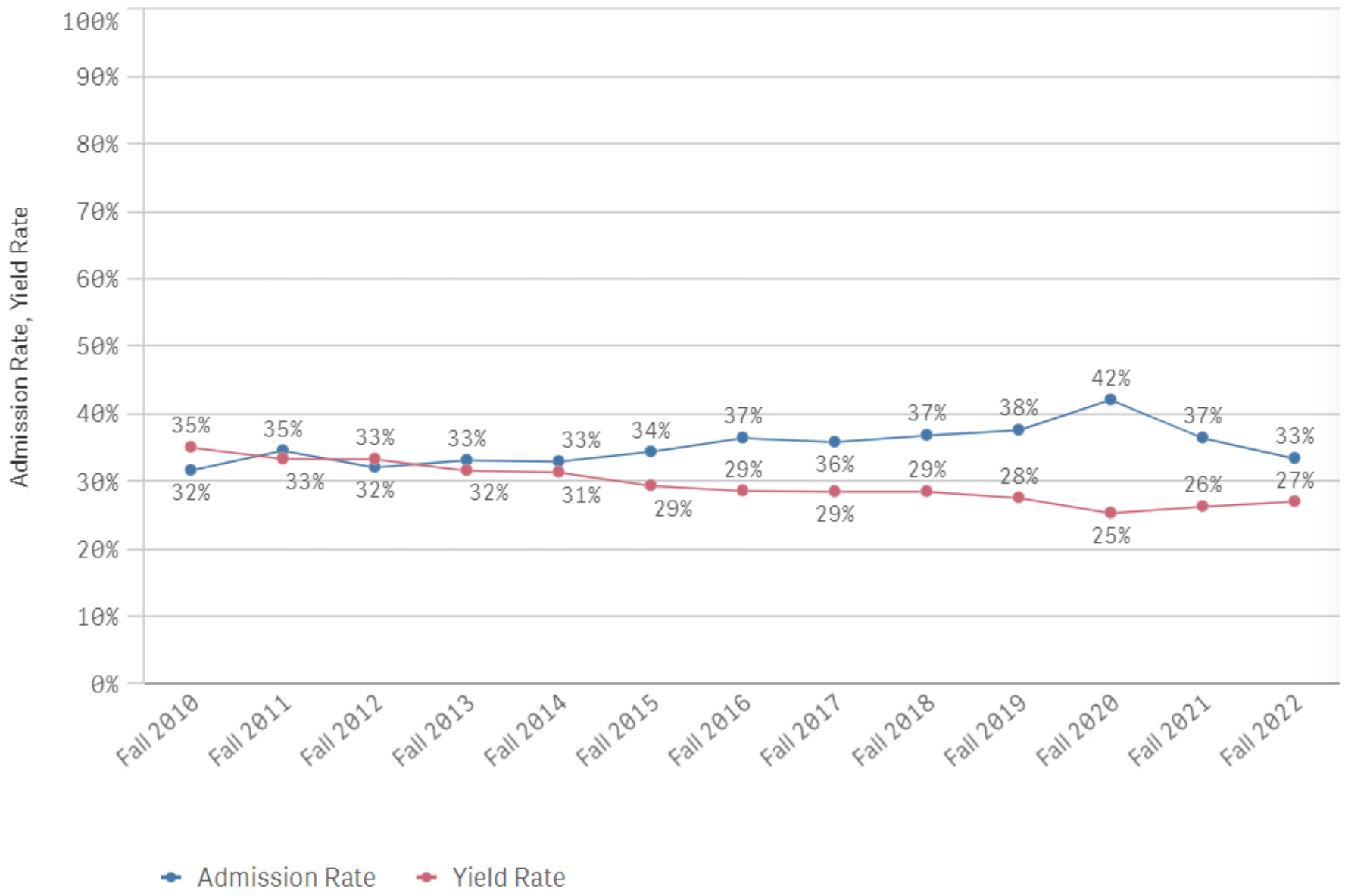
No selections applied

Selections

II. First-time Freshmen Admission, Yield Rate

Residency Gender

Chart ADM 2.1 First-Time Freshmen Admission & Yield Rate, 2010-2022



Notes: Admission Rate = Admitted / Applied. Yield Rate = Enrolled / Admitted.

Table ADM 2.1 First-Time Freshmen Admission & Yield Rate, 2010-2022

Academic Period	Values	
	Admission Rate	Yield Rate
Fall 2022	33%	27%
Fall 2021	37%	26%
Fall 2020	42%	25%
Fall 2019	38%	28%
Fall 2018	37%	29%
Fall 2017	36%	29%
Fall 2016	37%	29%
Fall 2015	34%	29%
Fall 2014	33%	31%
Fall 2013	33%	32%
Fall 2012	32%	33%
Fall 2011	35%	33%
Fall 2010	32%	35%

Notes: Admission Rate = Admitted / Applied. Yield Rate = Enrolled / Admitted.

No selections applied

Selections

III. First-time Freshmen SAT Profile

Residency Gender

***Since 2017, William & Mary reports New or converted New SAT Score**

Chart ADM 3.2 First-Time Freshmen SAT Reading

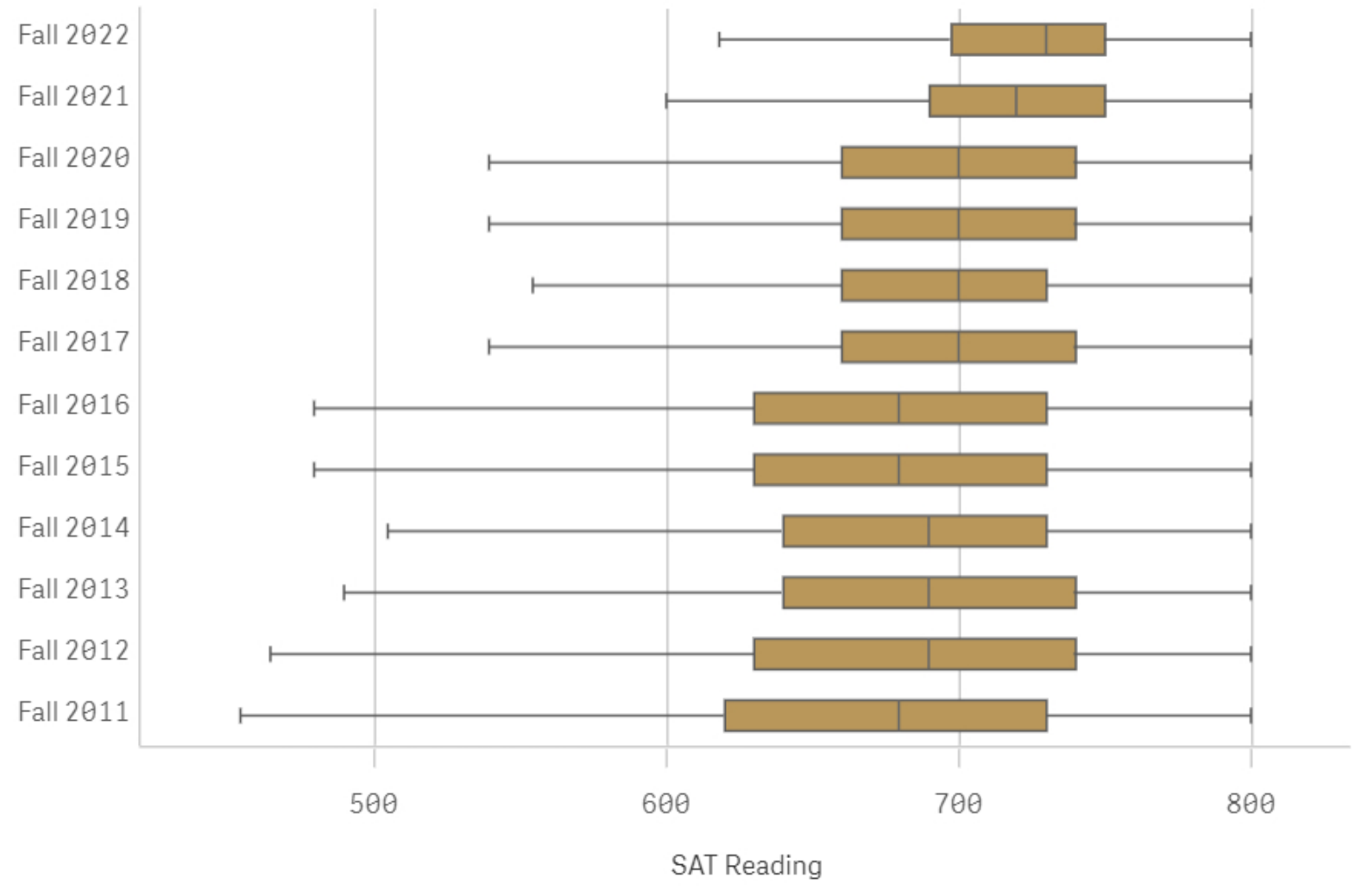


Chart ADM 3.3 First-Time Freshmen SAT Math

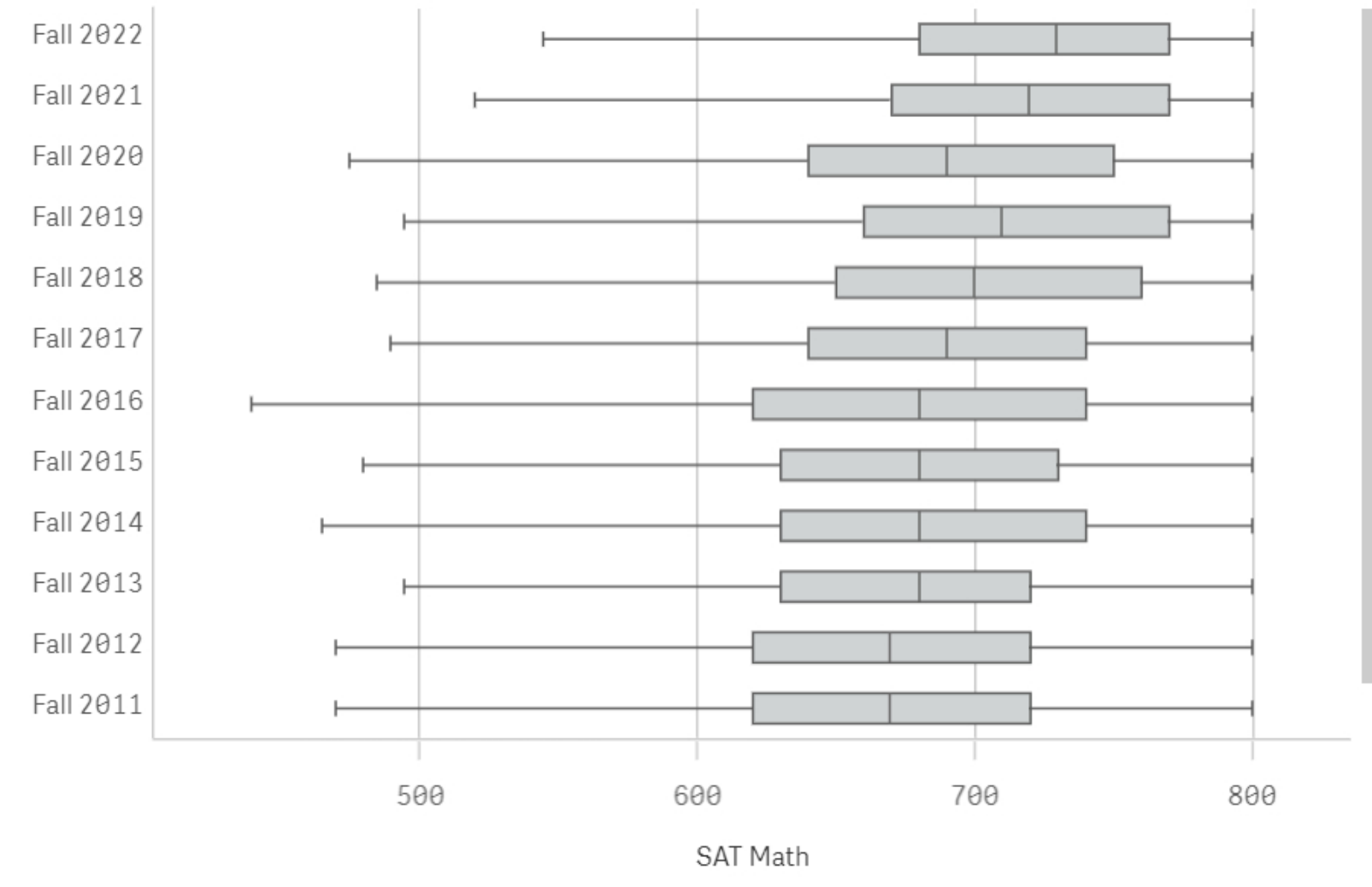


Table ADM 3.1 First-Time Freshmen SAT Total Score P...

Academic Period	SAT Total Bottom Quartile	SAT Total Median	SAT Total Top Quartile
Fall 2022	1,378	1,460	1,520
Fall 2021	1,360	1,440	1,520
Fall 2020	1,300	1,390	1,490
Fall 2019	1,320	1,410	1,510
Fall 2018	1,310	1,400	1,490
Fall 2017	1,300	1,390	1,480
Fall 2016	1,250	1,360	1,470
Fall 2015	1,260	1,360	1,460
Fall 2014	1,270	1,370	1,470
Fall 2013	1,270	1,370	1,460
Fall 2012	1,250	1,360	1,460
Fall 2011	1,240	1,350	1,450
Fall 2010	1,255	1,350	1,440

Table ADM 3. 2 First-Time Freshmen SAT Reading Pro...

Academic Period	Reading Bottom Quartile	Reading Median	Reading Top Quartile
Fall 2022	698	730	750
Fall 2021	690	720	750
Fall 2020	660	700	740
Fall 2019	660	700	740
Fall 2018	660	700	730
Fall 2017	660	700	740
Fall 2016	630	680	730
Fall 2015	630	680	730
Fall 2014	640	690	730
Fall 2013	640	690	740
Fall 2012	630	690	740
Fall 2011	620	680	730
Fall 2010	635	680	730

Table ADM 3. 3 First-Time Freshmen SAT Math Profile

Academic Period	Math Bottom Quartile	Math Median	Math Top Quartile
Fall 2022	680	730	770
Fall 2021	670	720	770
Fall 2020	640	690	750
Fall 2019	660	710	770
Fall 2018	650	700	760
Fall 2017	640	690	740
Fall 2016	620	680	740
Fall 2015	630	680	730
Fall 2014	630	680	740
Fall 2013	630	680	720
Fall 2012	620	670	720
Fall 2011	620	670	720
Fall 2010	620	670	710

*The calculation is consistent with CDS method

IV. Transfer Students Applied, Admitted, and Enrolled

Residency Gender For more information about transfer students, please see Transfer Student Fact Book.

Chart ADM 4.1 Transfer Students Applied, Admitted, and Enrolled, 2010-2022

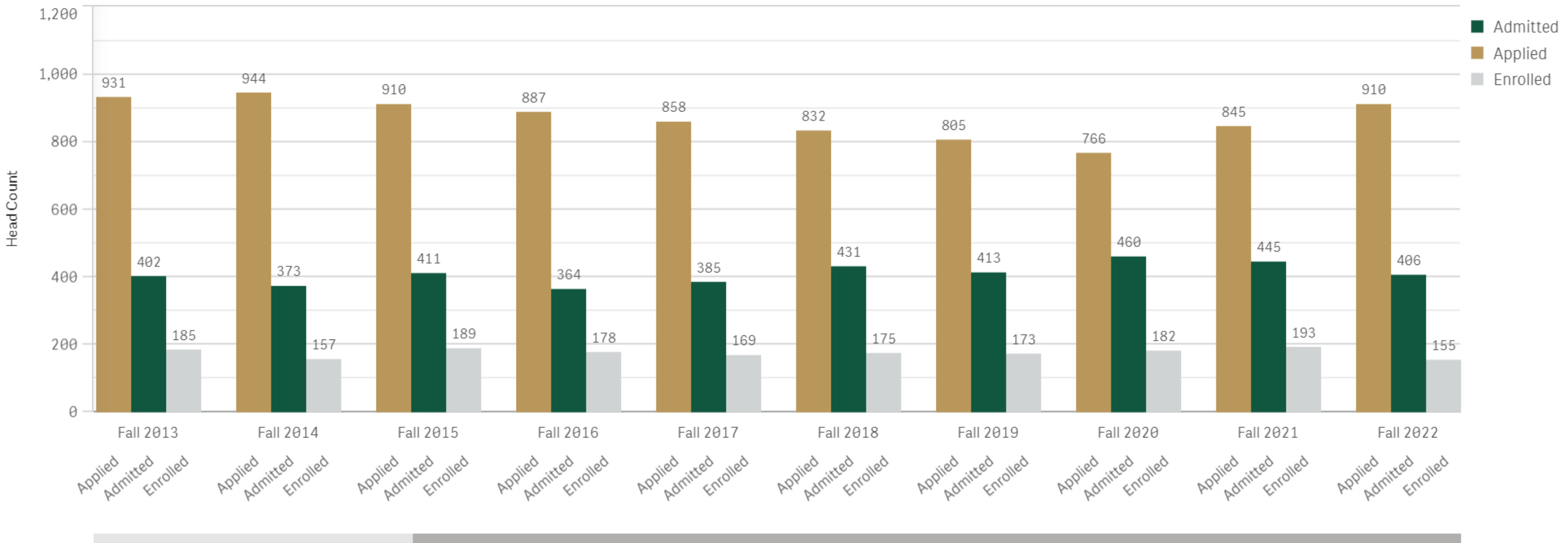


Table ADM 4.1 Transfer Students Applied, Admitted, and Enrolled, 2010-2022

	Application Status			Academic Period			Residency			Gender															
				Fall 2022			Fall 2021			Fall 2020			Fall 2019			Fall 2018			Fall 2017			Fall 2016			Fall 2015
	Totals	In-state	Out-of-state	Totals	In-state	Out-of-state	Totals	In-state	Out-of-state	Totals	In-state	Out-of-state	Totals	In-state	Out-of-state	Totals	In-state	Out-of-state	Totals	In-state	Out-of-state	Totals	In-state	Out-of-state	Totals
Applied	910	486	424	845	489	356	766	401	365	805	425	380	832	424	408	858	434	424	887	460	427	910			
Unreported/Unknown	*	*	-	-	-	-	-	-	-	-	-	-	-	-	-	-	-	-	-	-	-	-	-	-	-
Male	401	206	195	380	222	158	338	177	161	398	213	185	385	202	183	406	209	197	396	208	188	389			
Female	508	279	229	465	267	198	428	224	204	407	212	195	447	222	225	452	225	227	491	252	239	521			
Admitted	406	252	154	445	287	158	460	270	190	413	256	157	431	250	181	385	236	149	364	225	139	411			
Unreported/Unknown	*	*	-	-	-	-	-	-	-	-	-	-	-	-	-	-	-	-	-	-	-	-	-	-	-
Male	187	106	81	184	127	57	197	119	78	195	120	75	183	113	70	175	104	71	143	92	51	177			
Female	218	145	73	261	160	101	263	151	112	218	136	82	248	137	111	210	132	78	221	133	88	234			
Enrolled	155	112	43	193	156	37	182	151	31	173	133	40	175	125	50	169	129	40	178	129	49	189			
Unreported/Unknown	*	*	-	-	-	-	-	-	-	-	-	-	-	-	-	-	-	-	-	-	-	-	-	-	-
Male	69	45	24	81	64	17	77	69	8	76	57	19	77	55	22	70	52	18	74	57	17	82			
Female	85	66	19	112	92	20	105	82	23	97	76	21	98	70	28	99	77	22	104	72	32	107			

Cell values less than 5 will be displayed as an asterisk "**"

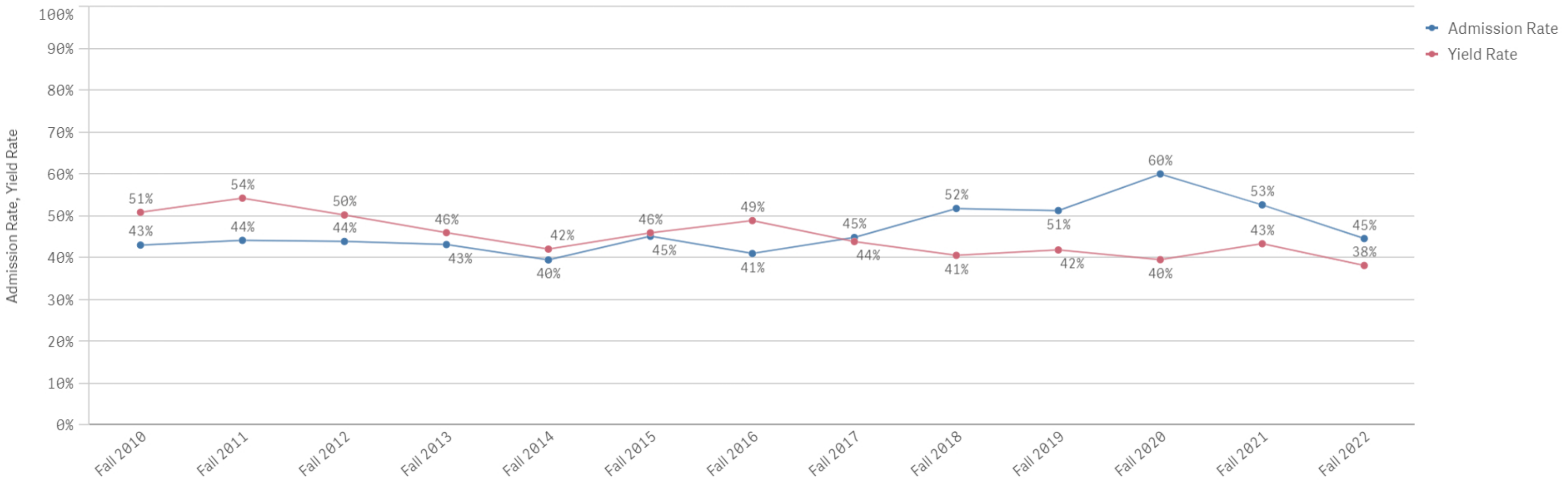
No selections applied

Selections

V. Transfer Student Admission & Yield Rate

Residency Gender For more information about transfer students, please see Transfer Student Fact Book.

Chart ADM 5.1 Transfer Student Admission & Yield Rate , 2010-2022



Notes: Admission Rate = Admitted /Applied. Yield Rate = Enrolled / Admitted.

Table AMD 5.2 Transfer Student Admission & Yield Rate 2010-2022

Values	Academic Period												
	Fall 2022	Fall 2021	Fall 2020	Fall 2019	Fall 2018	Fall 2017	Fall 2016	Fall 2015	Fall 2014	Fall 2013	Fall 2012	Fall 2011	Fall 2010
Admission Rate	45%	53%	60%	51%	52%	45%	41%	45%	40%	43%	44%	44%	43%
Yield Rate	38%	43%	40%	42%	41%	44%	49%	46%	42%	46%	50%	54%	51%

Notes: Admission Rate = Admitted /Applied. Yield Rate = Enrolled / Admitted.

VI. Graduate Student Admission

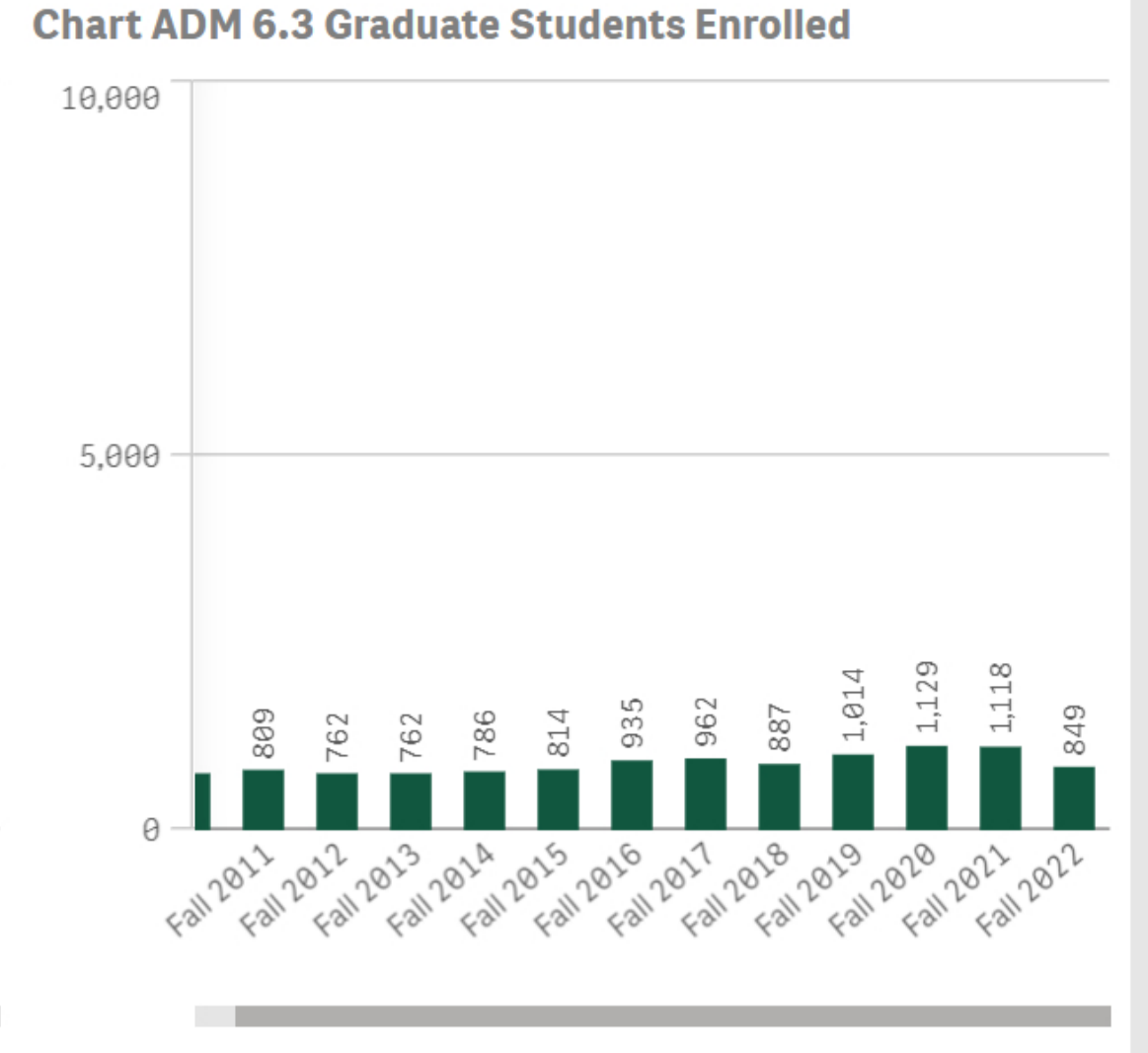
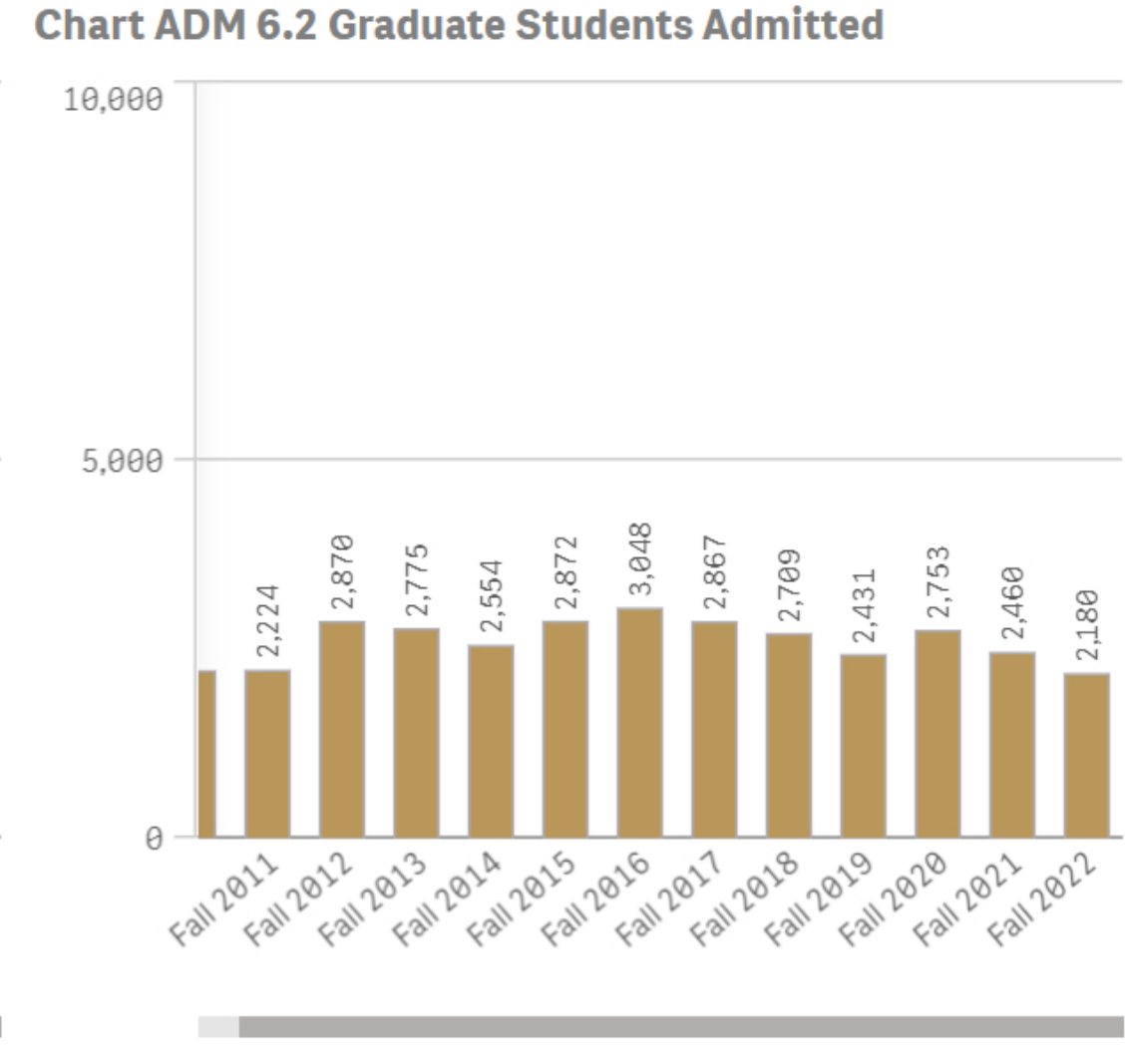
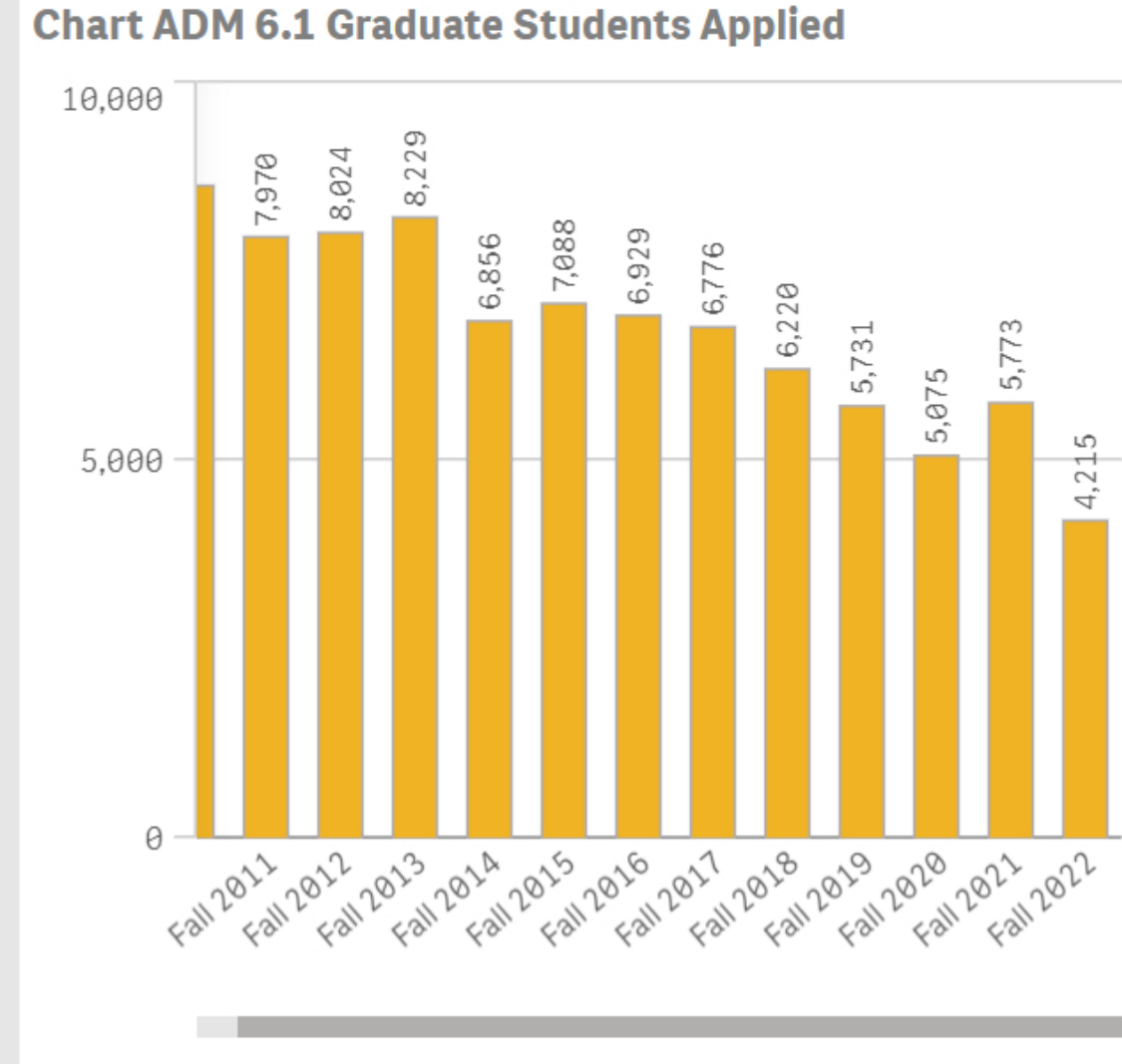


Table AMD 6.1 Graduate Students Applied by School/College and Degree Level

	School/College			Degree Level			Academic Period												
							Fall 2022	Fall 2021	Fall 2020	Fall 2019	Fall 2018	Fall 2017	Fall 2016	Fall 2015	Fall 2014	Fall 2013	Fall 2012	Fall 2011	Fall 2010
Totals							4,215	5,773	5,075	5,731	6,220	6,775	6,929	7,088	6,856	8,229	8,024	7,970	8,648
Faculty of Arts and Sciences							601	764	473	537	602	657	703	693	747	708	823	815	839
Masters Degree							449	607	353	426	457	452	462	480	499	464	540	519	520
Doctoral Degree							152	157	120	111	145	205	241	213	248	244	283	296	319
School of Business							966	1,108	1,385	1,109	1,328	1,323	1,245	1,023	836	777	739	400	761
Postbaccalaureate Certificate							26	21	23	-	-	-	-	-	-	-	-	-	-
Masters Degree							940	1,087	1,362	1,109	1,328	1,323	1,245	1,023	836	777	739	400	761
School of Education							835	1,027	631	544	474	499	423	433	517	503	617	613	524
Postbaccalaureate Certificate							48	-	-	-	*	*	*	*	-	-	-	-	-
Masters Degree							665	892	535	440	369	370	330	344	403	408	494	491	436
Post Masters Certificate							20	22	13	12	9	11	*	8	10	13	12	10	12
Doctoral Degree							102	113	83	92	94	114	90	80	104	82	111	112	76
School of Law							1,701	2,751	2,499	3,461	3,732	4,196	4,453	4,823	4,649	6,105	5,725	6,046	6,406
Masters Degree							157	108	164	148	140	162	185	216	199	176	148	104	113
First-Professional Degree							1,544	2,643	2,335	3,313	3,592	4,034	4,268	4,607	4,450	5,929	5,577	5,942	6,293
School of Marine Science							112	123	87	80	84	100	105	116	107	136	120	96	118
Masters Degree							90	107	74	64	69	74	85	89	75	110	103	79	99
Doctoral Degree							22	16	13	16	15	26	20	27	32	26	17	17	19

Cell values less than 5 will be displayed as an asterisk ***

Table AMD 6.2 Graduate Students Admitted by School/College and Degree Level

	School/College			Degree Level			Academic Period												
							Fall 2022	Fall 2021	Fall 2020	Fall 2019	Fall 2018	Fall 2017	Fall 2016	Fall 2015	Fall 2014	Fall 2013	Fall 2012	Fall 2011	Fall 2010
Totals							2,180	2,460	2,753	2,431	2,709	2,867	3,048	2,872	2,554	2,775	2,870	2,224	2,217
Faculty of Arts and Sciences							144	166	144	151	174	214	220	235	240	229	266	247	247
Masters Degree							104	115	94	102	123	150	154	145	143	138	160	167	167
Doctoral Degree							40	51	50	49	51	64	66	90	97	91	106	80	80
School of Business							763	840	1,020	761	797	740	625	513	406	321	374	243	385
Postbaccalaureate Certificate							25	21	22	-	-	-	-	-	-	-	-	-	-
Masters Degree							738	819	998	761	797	740	625	513	406	321	374	243	385
School of Education							483	509	443	352	290	303	276	267	300	298	329	318	269
Postbaccalaureate Certificate							41	-	-	-	*	-	*	*	-	-	-	-	-
Masters Degree							357	412	376	294	243	242	225	214	234	248	264	253	225
Post Masters Certificate							18	21	13	12	8	9	-	7	9	12	12	10	9
Doctoral Degree							67	76	54	46	37	52	50	45	57	38	53	55	35
School of Law							763	905	1,123	1,145	1,422	1,586	1,898	1,824	1,579	1,892	1,876	1,398	1,282
Masters Degree							52	94	142	142	133	143	172	170	145	145	110	89	87
First-Professional Degree							711	811	981	1,003	1,289	1,443	1,726	1,654	1,434	1,747	1,766	1,309	1,195
School of Marine Science							27	40	23	22	26	24	29	33	29	35	25	18	34
Masters Degree							19	33	20	17	18	18	21	22	18	29	19	13	26
Doctoral Degree							8	7	*	5	8	6	8	11	11	6	6	5	8

Cell values less than 5 will be displayed as an asterisk ***

Table AMD 6.3 Graduate Students Enrolled by School/College and Degree Level

	School/College			Degree Level			Academic Period												
							Fall 2022	Fall 2021	Fall 2020	Fall 2019	Fall 2018	Fall 2017	Fall 2016	Fall 2015	Fall 2014	Fall 2013	Fall 2012	Fall 2011	Fall 2010
Totals							849	1,118	1,129	1,014	887	962	935	814	786	762	762	809	762
Faculty of Arts and Sciences							96	109	86	96	84	113	106	108	112	104	121	125	119
Postbaccalaureate Certificate							*	8	8	10	*	*	*	-	-	-	-	-	-
Masters Degree							66	73	53	60	57	82	78	74	75	79	80	88	88
Post Masters Certificate							-	-	-	-	-	-	-	6	-	-	-	-	-
Doctoral Degree							26	28	25	26	23	30	26	28	37	25	41	37	31
School of Business							334	450	494	397	387	431	370	300	240	189	214	234	224
Postbaccalaureate Certificate							10	7	14	-	-	-	-	-	-	-	-	-	-
Masters Degree							324	443	480	397	387	431	370	300	240	189	214	234	224
School of Education							177	330	280	231	180	199	153	158	167	169	185	190	159
Postbaccalaureate Certificate							35	-	-	-	-	-	-	-	-	-	-	-	-
Masters Degree							112	254	235	188	145	147	115	124	120	129	136	141	130
Post Masters Certificate							14	21	13	12	7	9	-	6	9	10	12	10	9
Doctoral Degree							16	55	32	31	28	43	38	28	38	30	37	39	20
School of Law							224	199	254	270	221	201	287	229	250	281	224	245	233
Masters Degree							12	23	25	30	28	16	51	28	36	55	27	28	19
First-Professional Degree							212	176	229	240	193	185	236	201	214	226	197	217	214
School of Marine Science							18	30	15	20	15	18	19	19	17	19	18	15	27
Masters Degree							11	25	11	15	9	14	13	14	10	13	15	9	21
Doctoral Degree							7	5	*	5	6	*	6						